

LARUE COUNTY 4-H

NEWSLETTER

AUGUST 2024

KENTUCKY  
COOPERATIVE EXTENSION

UK MARTIN-GATTON COLLEGE OF AGRICULTURE, FOOD AND ENVIRONMENT
KSU COLLEGE OF AGRICULTURE, COMMUNITY AND THE SCIENCES

LaRue County

PO Box 210, 807 Old Elizabethtown Rd.

Hodgenville, KY 42748-0210

(270) 358-3401

larue.ca.uky.edu

Calendar of Events:

August 1 - 4-H Fair Entry Day | 10:00 - 1:00 at the LC Fairgrounds

**August 1 - Shooting Sports | 6:30pm at the New Haven Gun Club -
Weather permitting**

**August 12 - Wrangler's Horse Club | 6:00pm
Livestock Club | 6:00pm**

**August 13 - Country Ham Tagging | 3:30-5:30pm
Gardening Club | 5:00pm**

August 15 - Shooting Sports | 6:30pm at the New Haven Gun Club

August 20 - Dog Club | 6:00pm

August 21 - Canoe & Kayak Club | 6:30pm

August 27 - LaRue County Fair Meeting | 5:30pm



**MEETINGS ARE HELD AT
THE EXTENSION OFFICE
UNLESS NOTED
OTHERWISE**



**BACK
to
SCHOOL**

Sincerely,

Misty Wilmoth

Misty Wilmoth
LaRue County Extension Agent
For 4-H Youth Development
mwilmoth@uky.edu

Cooperative Extension Service

Agriculture and Natural Resources
Family and Consumer Sciences
4-H Youth Development
Community and Economic Development

MARTIN-GATTON COLLEGE OF AGRICULTURE, FOOD AND ENVIRONMENT

Educational programs of Kentucky Cooperative Extension serve all people regardless of economic or social status and will not discriminate on the basis of race, color, ethnic origin, national origin, creed, religion, political belief, sex, sexual orientation, gender identity, gender expression, pregnancy, marital status, genetic information, age, veteran status, physical or mental disability or reprisal or retaliation for prior civil rights activity. Reasonable accommodation of disability may be available with prior notice. Program information may be made available in languages other than English. University of Kentucky, Kentucky State University, U.S. Department of Agriculture, and Kentucky Counties, Cooperating.

Lexington, KY 40506



Disabilities
accommodated
with prior notification.



August
3rd
1-3pm

A FREE COMMUNITY EVENT HOSTED BY THE LARUE COUNTY 4-H COUNCIL

- GAMES & PRIZES
- PETTING ZOO
- BARREL TRAIN RIDES
- FOOD CRAFTS

LARUE COUNTY FAIRGROUNDS
 375 S. GREENSBURG ST.
 HODGENVILLE, KY 42748
 (270) 358-3401 - LARUE.EXT@UKY.EDU

Cooperative Extension Service



An Equal Opportunity Organization

2024
LaRue COUNTY FAIR SCHEDULE
 PRESENTED BY THE LARUE COUNTY 4-H COUNCIL



FLORAL HALL ENTRY
 10 AM - 1 PM

GOAT SHOW 4:30 PM

SHEEP SHOW (SHOWS TO RUN CONCURRENTLY)

WANT TO SHOW A GOAT?
You can do it! → Come learn how! - Open to LC youth

Thursday 8/1

DAIRY SHOW 10 AM

SENIOR CITIZEN'S DAY
 12:30 - 3:30 PM (LUNCH, ENTERTAINMENT, DOOR PRIZES)

Welcome

Friday 8/2

DOG SHOW 8:30 AM

POULTRY SHOW 9 AM

BEEF SHOW 10 AM

KIDS DAY 1-3 PM

FLORAL HALL ENTRY PICK UP 3-4 PM

Saturday 8/3

Scan the QR code to access the 4-H and Floral Hall Fair Catalogs!

LARUE COUNTY FAIRGROUNDS
 375 S. GREENSBURG ST., HODGENVILLE
 270-358-3401 OR LARUE.EXT@UKY.EDU






Cooperative Extension Service

diy **UPCYCLED lamp birdbath CONTEST**

Make a functional birdbath using a lamp as the base.
 Most creative creation wins

\$50!!!

LaRue County Fair 2024

LARUE COUNTY FAIRGROUNDS
 375 S. GREENSBURG ST.,
 HODGENVILLE - (270) 358-3401

8/1/2024 10am-1pm

OPEN TO LARUE COUNTY YOUTH
 SPONSORED BY THE 4-H GARDENING CLUB



PAGEANTS

TINY MISS & MISTER - LITTLE MISS & MISTER - PRETEEN - TEEN - MISS

LARUE COUNTY HIGH SCHOOL AUDITORIUM
 925 S. LINCOLN BLVD., HODGENVILLE - FRONT ENTRANCE
 BEGINS AT 9 AM

CONTACT: (270)763-2308 OR (270) 537-4951
 FACEBOOK: LARUE COUNTY FAIR PAGEANTS

Saturday 7/13

ABE'S BABES - BABY SHOW
 HODGENVILLE CHRISTIAN CHURCH ANNEX - 6:30 PM
 100 W MAIN ST., HODGENVILLE
 CONTACT: ABE 93.7 - (270) 491-5937

Friday 8/2

LARUE COUNTY 4-H

Dog Show

3 AUGUST 2024



8:30 A.M.



375 S. Greensburg St.

Hodgenville, KY 42748

Schedule

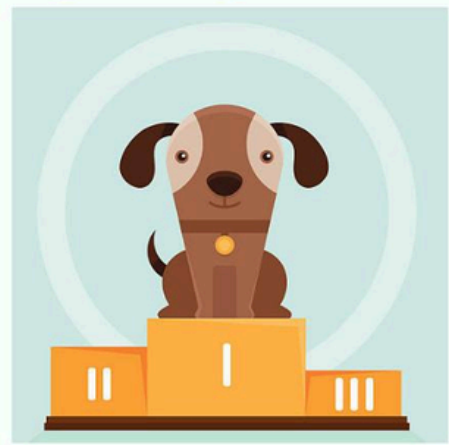
7:00-8:00 A.M. Set up & Registration

8:30 A.M. Dog Show Starts
Silent Auction Starts

Come out and support your local 4-H Dog Club by attending the LaRue County Fair Dog Show!

Classes:

- Showmanship
- Rally
- Jumpers Course
- Costume



To help fund Community Service Projects for the upcoming year, the LaRue County 4-H Dog Club will be hosting a Silent Auction in addition to the Dog Show!

4-H VOLUNTEER SPOTLIGHT



Scott & Chandra Brooks

SCOTT AND CHAUNDRA BROOKS HAVE VOLUNTEERED WITH LARUE COUNTY 4-H FOR SIX YEARS. CURRENTLY, THEY SERVE AS THE LEADERS OF THE CANOE & KAYAK CLUB. THEY OFTEN VOLUNTEER TO TRANSPORT 4-HERS TO EVENTS AND HELP THE TEEN CLUB SERVE AT WARM BLESSINGS AS WELL.

SCOTT AND CHAUNDRA TRY TO PLAN ANNUAL TRIPS FOR THE CLUB TO VISIT DIFFERENT AREAS OF KENTUCKY. LAST YEAR THE CLUB CANOED TO THE GROTTO AT GRAYSON LAKE. THE YEAR BEFORE, THEY KAYAKED AT THE GORGE UNDERGROUND AT RED RIVER GORGE. THIS YEAR, THE CLUB WILL BE WHITE WATER RAFTING ON THE CUMBERLAND RIVER.

SCOTT AND CHAUNDRA ENJOY WATCHING THE PROGRESSION OF EACH CLUB MEMBER. THEY ENJOY SEEING MEMBERS WHO MAY NEED EXTRA HELP TRANSFORM TO GROUP LEADERS. THEY FEEL 4-H OFFERS MANY BENEFITS FOR THOSE WHO PARTICIPATE. 4-HERS ARE GIVEN AN OPPORTUNITY TO PARTICIPATE IN OUTDOOR ACTIVITIES THAT THEY MAY NOT BE ABLE TO DO OTHERWISE. THEY ALSO BELIEVE MEMBERS GAIN SELF CONFIDENCE AS THEY CONQUER NEW TASKS!





Support LaRue County 4-H using your Kroger Plus card!

To support LaRue County 4-H by shopping at Kroger, you must have a Kroger Plus Card. Visit your local Kroger or Kroger.com to register for a Kroger Plus Card. If you use your phone number at the register, call 800-576-4377, select option 4 to get your Kroger Plus card number.

- Scan the QR code below or visit <https://www.kroger.com/i/community/community-rewards>
- Information regarding the program will appear. Click here shown on step 2.
- Once prompted, log in to your digital account. If you do not have a digital account, create one using your email and Kroger Plus card number.
- You will be redirected to your Community Rewards account page. Click enroll. **Search “LaRue County 4-H” or enter NPO number IR794.** Click enroll again.
- To verify you are enrolled correctly, you should see the organization name on your community account page.
- **Members must swipe their registered Kroger Plus card or use the phone number linked to their card when shopping for each purchase to count.**



Visit

<https://www.kroger.com/i/community/community-rewards>
or scan the QR Code.



STATE WRITTEN COMMUNICATIONS RESULTS!



Eva Falk
Jr. Poetry
Champion



Hunter Locke
Jr. Poetry
Blue
3rd Place



Ellee Marksbury
Jr. Press Release
&
Jr. PSA
Blue



Hannah Falk
Sr. Poetry
Blue
3rd Place



Congratulations!



Cyrus Bivens

Champion

16 year old Speech

Sr. Health Demonstration

**STATE COMMUNICATIONS DAY
RESULTS!**

Anna Shaw

Reserve Champion

Jr. Performing Arts

Demonstration



STATE COMMUNICATIONS DAY RESULTS!

Kaylee Rucker

9 year old speech - Blue

Reed Mills

10 year old speech - Blue

Cyrus Bivens

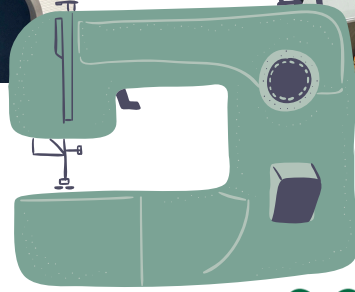
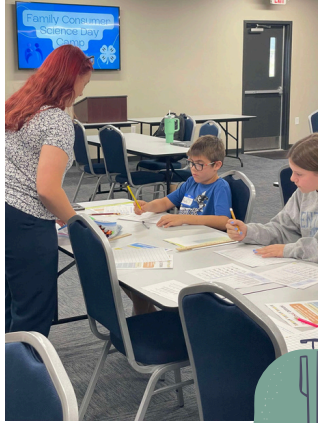
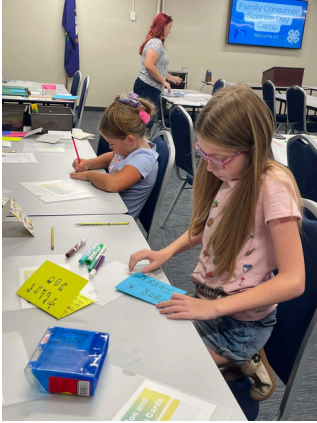
Mock Interview - Blue

Avery Bivens

Jr. Visual Arts Demo - Blue



FCS DAY CAMP





4-H



Salsa Making & Canning

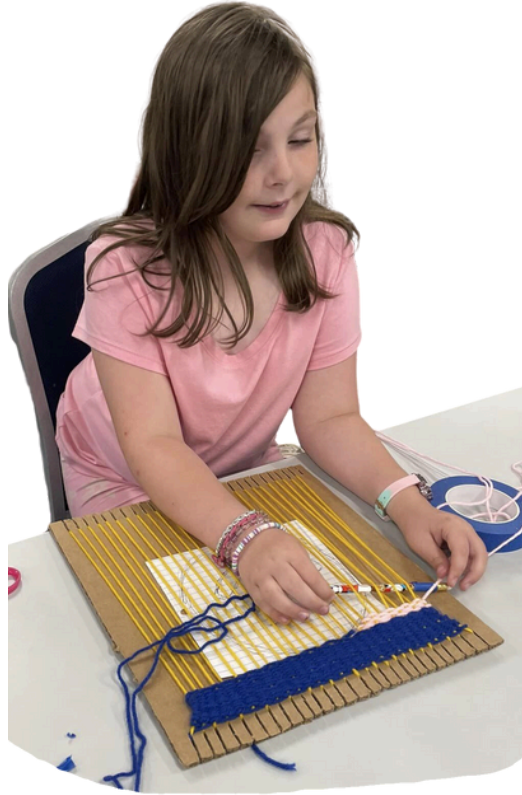
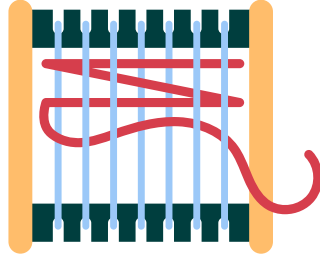


Gardening Club

Next Meeting: Tuesday, August 13th @ 5:00pm



4-H Weaving Class



4-H CAMP
ADULT & TEEN LEADER

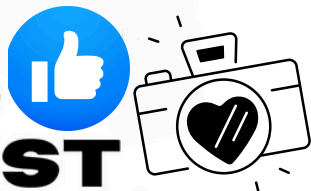


PHOTO CONTEST





WINNER



*Photo submitted by:
Addison Skaggs*



*Photo taken by:
Tony Wells*



Bacon and Tomato Dip

Ingredients:

- 1 cup fat free sour cream
- 1 cup low fat mayonnaise
- 2 large tomatoes, diced, reserve excess juice
- 4 slices bacon, cooked crisp and crumbled
- 1 teaspoon garlic powder

Directions:

1. Combine all ingredients.
2. Add reserved tomato juice until dip reaches desired consistency.
3. Serve with fresh vegetables or reduced fat crackers.

Source: *Plate it up! Kentucky Proud Project.*

50 calories; 3g fat; 1g saturated fat; 5mg cholesterol; 160mg sodium; 6g carbohydrate; 0g fiber; 3g sugar; 1g protein.



Canoe & Kayak Club

**The LaRue County 4-H
Canoe & Kayak Club
recently went on an
outing to Green River.**

**The next Canoe & Kayak
Club meeting will be on
Wednesday, August 21st at
6:30pm at the
LaRue County Extension
Office!**