

LARUE COUNTY 4-H NEWSLETTER

June 2024



KENTUCKY  KENTUCKY STATE UNIVERSITY
COOPERATIVE EXTENSION

UK MARTIN-GATTON COLLEGE OF AGRICULTURE, FOOD AND ENVIRONMENT
KSU COLLEGE OF AGRICULTURE, COMMUNITY AND THE SCIENCES

LaRue County
PO Box 210, 807 Old Elizabethtown Rd.
Hodgenville, KY 42748-0210
(270) 358-3401
larue.ca.uky.edu

Talent Showcase Results



MOST CREATIVE - BEN & LEO FALK

MOST ENTHUSIASM - KENNEDY THOMAS & RYLEE HART

MOST ARTISTIC - HANNAH FALK

BEST VOCALS - EVA & CAROLINE FALK

OUTSTANDING CLOVERBUD VOCAL - PENELOPE ESTES

BEST GUITAR DEBUT - TOMMY WILMOTH



Sincerely,

Misty Wilmoth

Misty Wilmoth
LaRue County Extension Agent
For 4-H Youth Development
mwilmoth@uky.edu

Cooperative Extension Service

Agriculture and Natural Resources
Family and Consumer Sciences
4-H Youth Development
Community and Economic Development

MARTIN-GATTON COLLEGE OF AGRICULTURE, FOOD AND ENVIRONMENT

Educational programs of Kentucky Cooperative Extension serve all people regardless of economic or social status and will not discriminate on the basis of race, color, ethnic origin, national origin, creed, religion, political belief, sex, sexual orientation, gender identity, gender expression, pregnancy, marital status, genetic information, age, veteran status, physical or mental disability or reprisal or retaliation for prior civil rights activity. Reasonable accommodation of disability may be available with prior notice. Program information may be made available in languages other than English. University of Kentucky, Kentucky State University, U.S. Department of Agriculture, and Kentucky Counties, Cooperating.

Lexington, KY 40506



Disabilities
accommodated
with prior notification.

Calendar Of Events

June 6 : Shooting Sports - 6:30pm at the New Haven Gun Club

June 10 : Dog Club Training - 5:00pm at the Saddle Club

June 11 : Gardening Club - 5:00pm

June 11-14 : State 4-H Teen Conference

June 13 : LaRue County Fair Committee Meeting - 6:00pm

June 15 : Dog Club - Paws & Nature at Bernheim Forest - 10:00am

June 17 : Teen Club - Deadline to sign up for Beech Bend trip

June 17 : 4-H Camp Lice Check from 3:00-4:30pm

June 17 : Warm Blessings Volunteer Opportunity for Teen Club

June 18-21 : 4-H Camp

June 18 : Dog Club Meeting and Training - 6:00pm

June 19 : Canoe & Kayak Club meeting - 6:30pm

June 20 : Shooting Sports - 6:30pm at the New Haven Gun Club

June 21-23 : Cloverbud Camp

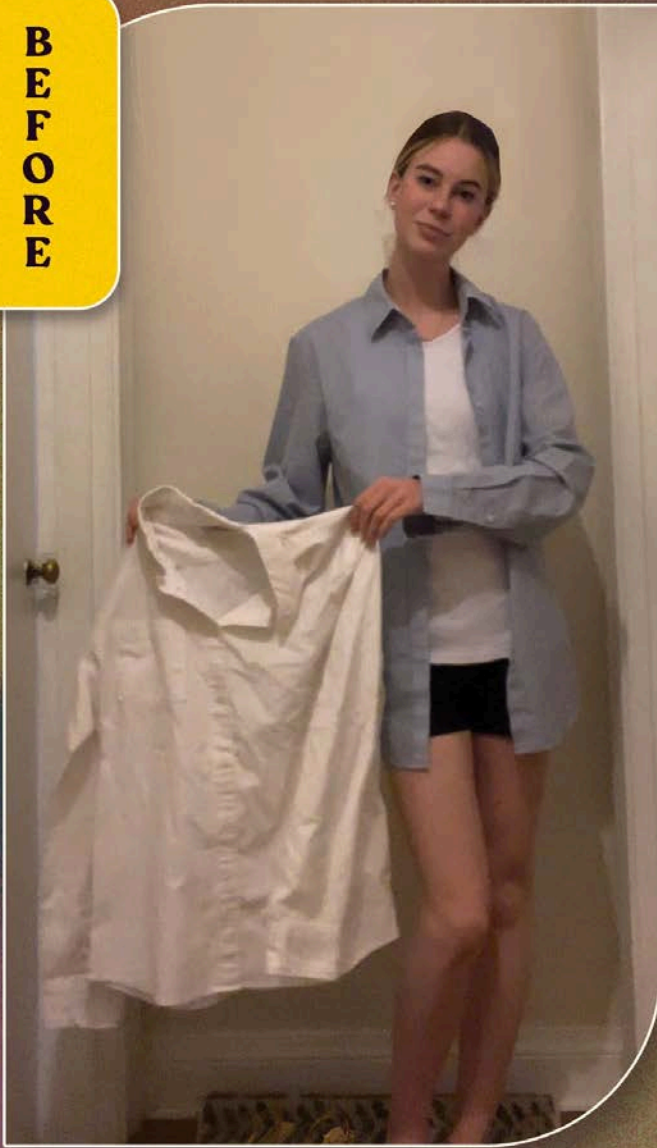


Meetings are held at the LaRue County Extension Service unless otherwise noted.



Goodwill
INDUSTRIES OF KENTUCKY

BEFORE



AFTER

ISABELLA
LaRue County

ISABELLA DAY PARTICIPATED IN THE GOODWILL MEETS 4-H CHALLENGE! THIS CHALLENGE ENCOURAGES YOUTH TO EXPLORE UPCYCLING AND THRIFTING. EARLIER THIS YEAR, ISABELLA RECEIVED A \$20 GOODWILL VOUCHER FOR THE PURPOSE OF COLLECTING MATERIALS. SHE THEN USED HER SEWING SKILLS TO REVAMP THE ITEMS, TURNING SOMETHING OLD INTO SOMETHING NEW!



TEEN CLUB



JULY 6TH

TEEN CLUB TRIP TO BEECH BEND PARK AND SPLASH LAGOON.

WE WILL NEED A MINIMUM OF 15 TO ATTEND!

TEEN CLUB MEMBERS NEED TO PAY \$10.00 TO ATTEND BY JUNE 17TH.

ADULT APPROVED CHAPERONES WHO ARE DRIVING WILL ATTEND FOR FREE.

ADDITIONAL SIBLINGS OR FRIENDS CAN ATTEND FOR THE GROUP RATE OF \$33.00.



**CALL 270-358-3401
TO REGISTER**



FAMILY CONSUMER SCIENCE DAY CAMP

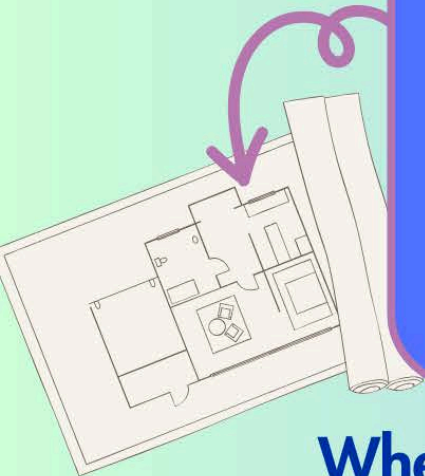
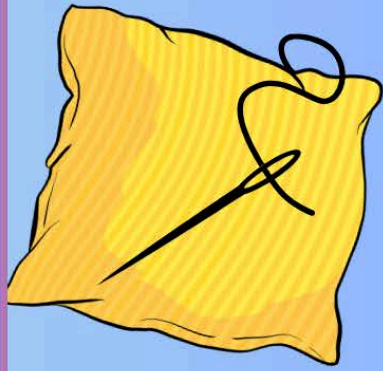
Activities Include:

Cupcake Baking & Decorating

Sewing Pillow Cases

Designing A Bedroom

Card Designs



**Where: LaRue County Extension Office
807 Old Elizabethtown Road**

**When: July 17th, 2024 ● 9:00 a.m. - 3:00 p.m.
Ages 8 - 18**

Cooperative Extension Service

Agriculture and Natural Resources
Family and Consumer Sciences
4-H Youth Development
Community and Economic Development

MARTIN-GATTON COLLEGE OF AGRICULTURE, FOOD AND ENVIRONMENT

Educational programs of Kentucky Cooperative Extension serve all people regardless of economic or social status and will not discriminate on the basis of race, color, ethnic origin, national origin, creed, religion, political belief, sex, sexual orientation, gender identity, gender expression, pregnancy, marital status, genetic information, age, veteran status, physical or mental disability or reprisal or retaliation for prior civil rights activity. Reasonable accommodation of disability may be available with prior notice. Program information may be made available in languages other than English. University of Kentucky, Kentucky State University, U.S. Department of Agriculture, and Kentucky Counties, Cooperating. Lexington, KY 40506



Disabilities accommodated with prior notification.

COUNTRY HAM WASHING

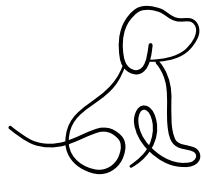




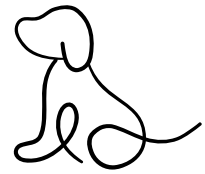
GARDENING CLUB

NEXT MEETING WILL BE HELD ON TUESDAY, JUNE 11TH @ 5:00PM





4-H DOG CLUB



June 10 - Training at the Saddle Club @ 5:00 p.m.



June 15 - Paws and Nature Event at Bernheim Forest
Group will meet at 10:00 a.m.

Make sure you have rabies tags for your dogs!



June 18 - Monthly Meeting and dog training at the Extension Office @ 6:00 p.m.



August 3 - LaRue County Fair Dog Show

8:00 a.m. Check in
8:30 a.m. Show begins

Dog Show Classes: Showmanship, Agility, Costume, & Rally



LARUE COUNTY FAIR



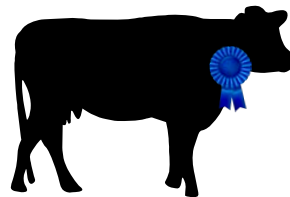
AUGUST 1ST

SHEEP SHOW
GOAT SHOW
FLORAL HALL ENTRY DAY
4-H ENTRY DAY



AUGUST 2ND

DAIRY SHOW



AUGUST 3RD

POULTRY SHOW
KIDS DAY
RABBIT SHOW
DOG SHOW
BEEF SHOW



STATE FAIR LIVESTOCK ENTRY DEADLINE

The deadline to register is July 10, 2024 at Midnight. Families must visit <https://kystatefair.org/livestock-exhibitor-info> to register: Beef, Dairy, Swine, Sheep, Goats, Open Rabbits, and Open Poultry for the State Fair Livestock Shows.



**KAYLEE RUCKER
9 YEAR OLD CHAMP**



**REED MILLS
10 YEAR OLD CHAMP**



**ELLEE MARKSBURY
12 YEAR OLD CHAMP**



**CYRUS BIVENS
16 YEAR OLD CHAMP
SENIOR HEALTH CHAMP
MOCK INTERVIEW CHAMP**



**ANNA SHAW
JUNIOR PERFORMING ARTS
CHAMP**



**AVERY BIVENS
JUNIOR VISUAL ARTS
CHAMP**

AREA COMMUNICATIONS DAY RESULTS

**BEST OF LUCK IN THE STATE COMPETITION ON
JULY 13TH!**

APPLY TO BE A HOST FAMILY

Host Japanese youth between the ages of 15-17 from July 21-August 16, 2024!



The Kentucky 4-H International Program needs your help! We are looking for wonderful host families who can provide a short summer stay for an international student or adult from July 21 to August 14. We still need to place 8 young people and 1 adult!

Requirements:

- Family must have a child that is the same gender, at least 10 years old, and within three years of age of the international delegate.
- All individuals must go through the Client Protection Process. (The Kentucky 4-H International Program pays for any fees incurred for this process and the state office handles the processing of paperwork.)

Benefits to families:

- Open your home to the world!
- Exchange culture and ideas!
- Do something different this summer!
- Make a lifelong friendship!
- No cost to participate other than providing a safe home and meals for the young person!
- Families can save credits for their child/children to travel abroad through 4-H!



CONTACT ISAAC HILPP ISAAC.HILPP@UKY.EDU OR 859-218-0990 FOR MORE INFORMATION.



MANDATORY LICE CHECK

MONDAY, JUNE 17TH 3:00-4:30PM AT THE LARUE COUNTY EXTENSION SERVICE



This recipe can be entered in the LaRue County Fair on August 1st!

RECIPE: Rolled Biscuits



From 4-H Cooking 201, page 50

Yield:

Ingredients

- 2 cups all-purpose flour
- 1 tablespoon baking powder
- 3/4 teaspoon salt
- 1/3 cup butter or margarine, chilled
- 3/4 cup low-fat milk
- Extra flour for kneading

Equipment

- Flour sifter
- Mixing bowl
- Measuring cups, dry and liquid
- Measuring spoons
- Pastry blender or fork
- Baking sheet
- Biscuit or cookie cutter



Order of Work

1. Preheat oven to 450 degrees F.
2. Sift flour once and then measure it. Add to mixing bowl. Add baking powder and salt. Stir.
3. Measure the fat and add to flour mixture. Cut the fat into the flour mixture with fork or pastry blender until well mixed.
4. Make a hole in the center of the flour mixture. Slowly add milk and stir, using just enough to make dough soft but not sticky. Stir just enough to wet the flour.
5. Sprinkle 3-4 tablespoons of flour on a clean, dry surface and spread the flour with your hand. Turn dough onto the floured surface. Knead dough a few times. To knead the dough, rub some flour onto your hands. Use the heel of your hand to push the dough away from you, and then fold it back over itself. Give the dough a little turn, push and turn again. Repeat 6-8 more times. Over-kneading the dough or adding too much flour will make the biscuits tough.
6. Roll or pat dough to 3/4-inch thickness. Dip the biscuit cutter into the flour. Use the biscuit cutter to cut the dough or cut it into 2-inch squares with a knife. Place biscuits on ungreased baking sheet about 2 inches apart. Gather the dough scraps and reshape. Cut biscuits and add to baking sheet.
7. Bake about 10-12 minutes or until golden brown.

Nutrition Facts per Biscuit: 128 calories, 5 g fat, 331 mg sodium, 17 g carbohydrate, 1 g fiber, 3 g protein, 43 mg calcium

Baking Tips:

- Use a 2" round cookie cutter.
- A biscuit forms flaky layers on the inside.



For the fair:

- Use of a 2" biscuit cutter is preferred.
- After the biscuits have completely cooled, place 3 biscuits on a disposable plate.
- Place the plate in a re-closeable zip-type plastic bag.



Copyright 2015 by the Board of Trustees of the University of Illinois. Recipe used with permission.

Baked products by Cathy Weaver
Photographs by Eric Comley

Learn more at www.kentucky4h.org or contact your county extension office.

4-H Cooking Club Fair Project Day

Wednesday, July 31 from 1:00-3:00pm
at the Extension office



4-H VOLUNTEER SPOTLIGHT

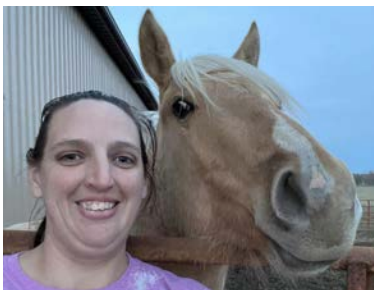


Stephanie Florence

STEPHANIE HAS BEEN A VOLUNTEER WITH LARUE COUNTY 4-H SINCE 2020. STEPHANIE IS CO-LEADER OF THE WRANGLERS HORSE CLUB, CO-LEADER OF THE 4-H DOG CLUB, A 4-H COUNCIL MEMBER, A FAIR COMMITTEE MEMBER AND A 4-H PARENT.

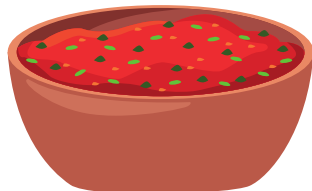
STEPHANIE WAS A 4-H MEMBER IN THE STATE OF INDIANA AND WAS A LEADER IN THE HORSE CLUB UNTIL SHE MOVED TO KENTUCKY. STEPHANIE KNEW SHE WANTED TO CONTINUE TO VOLUNTEER IN 4-H. AT A SADDLE CLUB MEETING, STEPHANIE AND LESLIE LEASOR DECIDED TO TEAM UP AND GET THE WRANGLERS HORSE CLUB UP AND GOING!

SEEING YOUTH STRIVE FOR THEIR PASSIONS IS WHAT ENCOURAGES STEPHANIE TO CONTINUE TO VOLUNTEER. STEPHANIE ENJOYS VOLUNTEERING WITH LARUE COUNTY 4-H AND WANTS TO BE A LIFETIME VOLUNTEER. HER BIGGEST REWARD FROM VOLUNTEERING, IS SEEING THE KIDS LEARN AND GROWN - THIS CREATES A MEMORY FOR HER THAT WILL LAST A LIFETIME!



JULY 2024

July 9 ~ 4-H Salsa Making and Canning ~ 3:30-5:00pm



REGISTRATION
REQUIRED

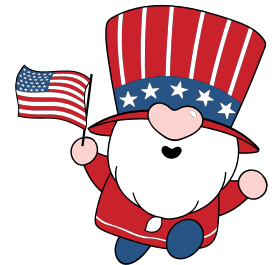
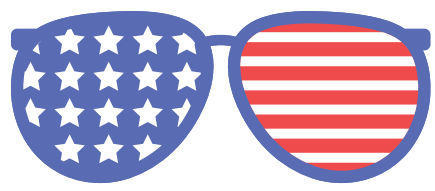
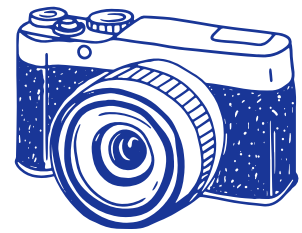
JULY 10 & 11
2 DAY CLASS: WEAVING PROJECT
4:00-5:00PM

OPEN TO THOSE WHO HAVE COMPLETED 1ST GRADE AND OLDER

An illustration of a wooden weaving loom with blue threads and a red thread being woven through it.

JULY 16 ~ 4-H PHOTOGRAPHY WORKSHOP

5:00-6:00PM



All programs will be held at the LaRue County Extension Service



opening day
June 13
9am

LARUE COUNTY
FARMERS Market

2024

LaRue County High School Back Parking Lot
925 S. Lincoln Blvd., Hodgenville

20 Market 24 SCHEDULE



- THURSDAY, JUNE 13
- THURSDAY, JUNE 20
- THURSDAY, JUNE 27
- THURSDAY, JULY 4
- SATURDAY, JULY 6
- THURSDAY, JULY 11
- THURSDAY, JULY 18
- SATURDAY, JULY 20
- THURSDAY, JULY 25
- THURSDAY, AUGUST 1
- SATURDAY, AUGUST 3

LC High School Parking Lot
925 S. Lincoln Blvd., Hodgenville



LaRue County
EXTENSION EXTENDED
Market

807 Old Elizabethtown Rd., Hodgenville

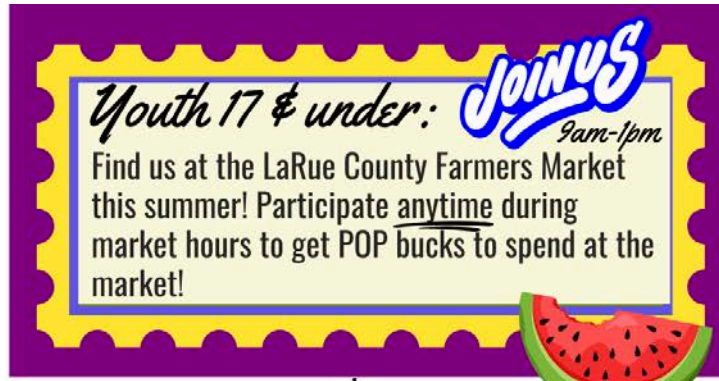
9am-1pm

- THURSDAY, AUGUST 8
- SATURDAY, AUGUST 17
- THURSDAY, AUGUST 29
- SATURDAY, AUGUST 31



POP
Club

POP-POWER OF PRODUCE



Youth 17 & under: JOIN US
9am-1pm

Find us at the LaRue County Farmers Market this summer! Participate anytime during market hours to get POP bucks to spend at the market!



LC Farmers Market - LC High School Back Parking Lot - 925 S. Lincoln Blvd., Hodgenville - (270) 358-3401



June 20
9am-1pm

July 4
9am-1pm

July 20
9am-1pm

FARMERS MARKET